



# MANAGE CART 24 & 32

Keep laptops secure, charged and up to date. The rugged Manage Cart is equipped with Ethernet cables, dedicated space for a rack-mount network switch, and two fans for cooling. Making it easy for IT administrators to push updates to all devices simultaneously.



Manage Cart shown in Cool Gray (CG) with Platinum (PM) Rails



## NETWORK READY

Designed to house a 19 in. network switch and equipped to connect for IT updates to devices.



## READY TO USE

The Manage Cart comes fully assembled and wired with Ethernet cables ready to load devices.



## SIZE MATTERS

Optimized space designed for laptops. The front-loading configuration can hold up to 32 devices.

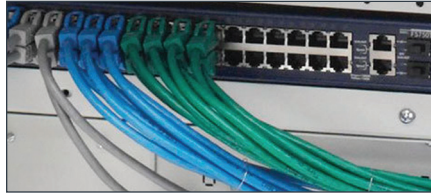


## BUILT TO LAST

Each unit is fully welded. Designed and built in the USA.



**TEMPERATURE MANAGEMENT** | Two built in cooling fans help to keep devices from overheating.



**EASY ACCESS** | Rear doors provide easy access to networking and cabling area.



**INTELLIGENT POWER** | Power manager continuously analyzes device power requirements, concentrating on devices that require power the most.



**INDUSTRIAL GRADE** | 5 in. wheels with both directional and brake locking casters.



**SECURITY** | Two 3- point locking doors and padlocks.

## SPECIFICATIONS

### Construction

USA-sourced steel  
Manufactured in  
Franklin Park, IL

### Device Compatibility

Up to 15 in.

### Power

AC: 120V AC, 12A, 50/60Hz

### Warranty

7 year electrical and  
mechanical warranty

### Shipment Includes:

MNGC24NR-CGPM  
MNGC32NR-CGPM

• Manage Cart -  
(Fully assembled)

- 24 / 32 Ethernet Cables
- Power cord
- Programmable  
combination padlock

MNGC24USBC-CGPM  
MNGC32USBC-CGPM

- Manage Cart Pre-Wired  
(Fully assembled)
- 24 / 32 Ethernet Cables
- 24 / 32 65W USB-C  
power adapters
- Power cord
- Programmable  
combination padlock

### Safety



## DIMENSIONS

	MNGC24NR-CGPM MNGC24USBC-CGPM	MNGC32NR-CGPM MNGC32USBC-CGPM
DELL SKUS	AC457914 AD249127	AC457915 AD249128
DEVICE CAPACITY	24   2 shelves	32   2 shelves
CART DIMENSIONS	34.5 x 25 x 43 in.	48 x 24 x 43 in.
SLOT DIMENSIONS	1.4 x 15.5 x 11.9 in.	1.7 x 15.5 x 11.9 in.
WEIGHT	172 lbs. 190 lbs.	251 lbs. 274 lbs.
COLOR	Cool Gray w/ Platinum Rails	

DIMENSIONS ARE EXPRESSED W X D X H

## YOUR PRODUCT. YOUR IDENTITY.

Choose from one of our 16 colors and  
personalize by branding with your own logo.



DESIGNED AND BUILT  
**IN THE USA**